

Public Document Pack

Working with communities to improve the quality of life for all in Argyll and Bute

www.argyllandbutecpp.net



argyll and bute

communityplanningpartnership

Municipal Buildings, Albany Street, Oban, PA34 4AW

Tel: 01631 567901 Fax: 01631570379

e.mail – jane.gillies@argyll-bute.gov.uk

10 January 2012

OBAN, LORN & THE ISLES LOCAL AREA COMMUNITY PLANNING GROUP – 11 JANUARY 2012

Please find attached items 3 (**OBAN RE-FRESH PLAN**), 8 (**LACPG PLAN**) and 11 (**WINTER FESTIVAL: REPORT BY FESTIVAL COMMITTEE**) which were marked on the agenda as “to follow”.

“TO FOLLOW” ITEMS

3. **OBAN RE-FRESH PLAN - ABC**(Pages 1 - 4)
8. **LACPG PLAN / SCORECARD / TRACKER / PYRAMID - ABC, CUSTOMER AND SUPPORT SERVICES / PARTNERS**(Pages 5 - 12)
11. **WINTER FESTIVAL: REPORT BY FESTIVAL COMMITTEE**(Pages 13 - 24)

This page is intentionally left blank

Oban Local Area Community Planning Group – written update for Oban CHORD for the meeting of 11 January 2012

Unfortunately, the Oban CHORD team cannot be present today due to other commitments however, the following summarises the latest developments:

Project components

- Oban Action Plan Refresh
- Traffic Management
- Transport Interchange
- Reconfiguration of the Bay

Aiming:

- To ensure appropriate plans are in place for CHORD allocation with high priority projects identified and early implementation spring / summer 2012; and
- That the OAP refresh sets out a clear vision for Oban's future

Consultation

- Successful public consultation held 22nd November with lots of useful comments and observations on the short list of CHORD options
- Draft Oban Action plan circulated to stakeholders, community councils and loaded onto the CHORD website for comment

Option Development for CHORD funding

- Short list of options developed and formed into an interim business case which was presented to the Project Board on 6th January 2012. This identifies short term actions and a medium term plan of action subject to final reporting by the south pier study (due February 2012).

Next Steps

- Progress the business case to CHORD Programme Board and Executive to allow funding to be released and short term projects implemented.
- Following approvals information will be made available online showing how money is being allocated. The Project Board will have final approval prior to implementation beginning on all components of the CHORD work.
- Finalisation of the Oban Action Plan following any further feedback and taking into account the CHORD funding allocations.

Please see the attached press release for further information on the Oban CHORD project.

Press release – 09 January 2012

The Oban CHORD project board has agreed to release £1.8million to enable key projects to be started across the town.

The schemes will cover initial phases of all three components of the CHORD programme in Oban – traffic management, reconfiguration of the bay/harbour and improvements to the transport interchange.

The decision was welcomed by Councillor Duncan MacIntyre, chair of the Oban CHORD project board, who said it marked a 'major milestone' in the overall programme.

"These projects will assist economic growth and consolidate Oban's position as the main town and harbour in the West Highlands," he said.

"They are set in the context of the Oban Action Plan, which sets out priorities for the town over the coming years and ensures that all projects are developed and implemented in a co-ordinated and strategic way.

"Both the Action Plan and the first phases of these schemes have been subject to in-depth public consultation, and I am delighted that residents, businesses and visitors took the time to engage with that process and tell us what they thought.

"Together, these projects represent the beginning of a very exciting time in the regeneration of Oban, and I very much look forward to monitoring their progress and seeing the benefits they bring to the town in the longer term."

The first phases of the projects – which the £1.84m will cover - include:

1. **Traffic management** – detailed design and implementation (subject to final sign-off by the project board) of physical improvements at known 'pinch points' in the town; relocation of the High School access to alleviate problems on Soroba Road; parking improvements; pedestrian crossing improvements; footpath completion and widening; cycling provision. The council will work in partnership with Transport Scotland on these improvements.
2. **Transport interchange** – detailed design and implementation (subject to final sign off by the project board) of signage improvements; provision of real time information and journey planning facilities; improvements to bus shelters; improvements to accessibility and taxi rank – all to improve the travelling experience of both residents and visitors.
3. **Reconfiguration of the bay/harbour area** – detailed design and implementation (subject to final sign off by the project board) on pontoons at the North Pier which would provide facilities for cruise ship tenders. These would be flexible such that if/when the North Pier extension works happened, the facilities could be relocated elsewhere.

Councillor MacIntyre said: "I am delighted that the project board has agreed to release this £1.84million as phase one of the CHORD investment, which of course totals £6.9million for Oban.

"The decision needs to be ratified by the CHORD programme management board and the council's Executive, but I am confident that they will be as impressed with the proposals as the project board was.

“These projects – both individually and together – will have a very positive impact on the town’s residents, visitors and investors, and will also align with and complement planned future investments such as the Lorn Arc project.

“We will continue to evolve the interrelated elements of Oban’s CHORD project in a phased way, and will continue to request funds in a phased manner.

“The CHORD project and the Lorn Arc together represent a tremendous opportunity for Oban and the surrounding area, and I very much look forward to seeing the benefits they will bring over the next few years.”

This page is intentionally left blank

Oban, Lorn the Isles LACPG Area Community Plan

Updated: 10/01/2012

	Provide a range of services that support carers in the task of assisting adults to live in the community.	Increase the percentage of respite hours provided via flexible outreach and support services in favour of formal care home based respite.	ABC	Shaun Davidson						risk of reduction/removal of funding	recommend using scorecard data for service
	Further development of the dementia project with partner agency.	Clients receive effective support at home.	ABC	Shaun Davidson						risk of reduction/removal of funding risk of failure of partnership (Considered unlikely)	recommend using scorecard data from Service
	Increase the amount of dementia support to clients within their own home.	Increase in the amount of respite at home, reduction in the amount of residential respite.	ABC	Shaun Davidson						risk of reduction/removal of funding risk of failure of partnership (Considered unlikely)	recommend using scorecard data from Service
	Improve access to Children and Families services by island communities through consultation with community representatives and partners to be concluded by 31st March 2011.	Increase the percentage of Child in Need referrals, which will receive timeous and robust responses.	ABC	Janice Frank	Mar-11					meeting Pat Trehan re her improvement plan but speak to Janice Ritchie prior to 31st august	This is quite problematical to measure since the qualitative issues are much more important than numerical targets recommend using service scorecard
	Strengthen the role and reach of the Oban, Lorn and the Isles 'Getting It Right' (GIRFEC) Locality Group	Getting It Right' Locality Groups and Sub Groups are convened	ABC	Janice Frank	Ongoing						see item above

		<p>Mental Health Service Redesign</p>	<p>Enhanced community mental health team in Oban. The clinical workforce profile for the Mental Health Service redesign was agreed by the Project Board on 22nd January 2011.</p>	<p>Aug-11</p>	<p>CHP</p>	<p>Josephine Bown</p>			<p>This includes the skills and post profile for each Locality Community Mental Health team. The existing OLI CPN nursing team will increase in size from around 4 nursing posts to approx 12 posts, including nursing, OT, cognitive behavioural therapist, primary mental health worker, additional psychology. Eventually the NHS and SW teams will merge to provide integrated service delivery. Before any further planning in-patient bed reductions in A & B Hospital can take place, as agreed during the public consultation, it is necessary to have most or all of the new community team members in place. Work has now commenced to develop a costed bridging plan to allow this to happen. Anticipated target date for developing the CMHTs will be July 2011.</p>	<p>Josephine Now retired caroline.champion@nhs.net is planning and public involvement manager. John Dreggorn is the project manager. Updates are published every couple of months at http://www.nshighland.scot.nhs.uk/CHP/ARGYLLANDBUTE/Pages/MentalHealthReview.aspx. Have agreed to Meet with Caroline to see if there is any way we can improve CHP and LACPG partnership working</p>
<p>Unique Ref No</p>	<p>Area outcome</p>	<p>Actions to achieve outcome</p>	<p>Success measures</p>	<p>Key dates</p>	<p>Lead partner</p>	<p>Lead officer</p>	<p>Links with capital investment</p>	<p>Risks</p>	<p>Updates for 9th March 2011</p>	<p>Risk level</p>
<p>Corporate objective 3 – Working together to improve the potential of our area</p>	<p>Good quality economic opportunities and housing enable young people and young families to live and work in their chosen communities</p>	<p>Improvement of infrastructure at Dunbeg to allow development of new mixed tenure housing development</p>	<p>Housing development completion</p>	<p>2013/14</p>	<p>WHHA / Transport Scotland</p>	<p>Moya Ingram / Moira MacVicar</p>	<p>Funding reduction affecting deliverability. The Government White Paper which is to be published at the beginning of February will bring significant changes to the funding of the development of affordable housing.</p>	<p>A group has been established to take forward the road development and progress is being made including plans for the CPO which will be required. However the new arrangements for funding affordable housing may put the deliverability of this project at risk.</p>	<p>CPO has been approved by Council for development road. WHHA were successful in obtaining grant funding from SHF and Scottish Government Innovation and Investment Fund to take forward development of first 50 houses to commence in Spring 2012.</p>	

Oban, Lorn the Isles LACPG Area Community Plan

Updated: 10/01/2012

		Development of renewables industry within OL&I area	Increased investment and industry related jobs	REAP report	ABC	Robert Pollock	Investment directed to other areas	Med	
OL&I-02	Improved transportation connectivity and infrastructure	Integrated transport links to health and other services	Public transport strategy priorities	Annual report	ABC	Douglas Blades	Impact of reduced budget on discretionary transport schemes	High	Public transport guides available from council at http://www.argyll-bute.gov.uk/transport-and-
	Improved transportation connectivity and infrastructure	Oban town centre traffic management	Stage 1 - Project Initiation Document approval	May-11	ABC	Nicola Debnam		Medium	tracking of these two should be the CHORD minutes and associated documents-can simply use CHORD project milestones from project plan
	Improved transportation connectivity and infrastructure	Development of new transport interchange	Stage 1 - Project Initiation Document approval	May-11	ABC	Nicola Debnam			Action should read "improved access to Oban Town Centre and to Oban Bay"
Corporate objective 4 – Working together to improve the potential of our organisation									
since organisation is LACPG, the progression of this plan itself is the success measure, The community engagement section demonstrate the who and how, and the full service summary show the what									

Oban, Lorn and the Isles LACPG Area Community Plan (Draft)

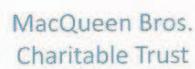
Community Engagement						
Unique Ref No	Community Engagement Outcomes	Actions to achieve outcome	Success measures	Key Dates	Lead	Risks
	Increase involvement of communities	Community event to be held to inform priority actions for inclusion in the area community plan	Event held and analysis of findings fed back to the LACPG	Nov-10	ABC	
		Volunteer Fair raise awareness of CPP and local involvement	Event completed		AVA	
		Third Sector Forum support meetings	Meeting dates and notes		TSP/AVA	
		Engagement with private sector	Partnership working practices adopted			
	Build capacity	Support services to volunteers and community/social enterprise groups/organisations	Training delivered by Third Sector Partnership	Nov-Mar 2011	TSP/AVA/ ABSEN	
	Sharing skills and resources	Community Toolkits/ Argyll communities website	Website hits		AVA	

This page is intentionally left blank

O BANWINTER 19th - 27th November 2011 FESTIVAL



Above photographs courtesy of Wee Beauty Photography



History

Over the last few years a group of individuals have undertaken various fundraising activities based on a Christmas theme to raise funds for local charities.

All the events to date have been single ,self funding events, with volunteer time and in kind local business support. However last year after members organised the "Victorian Market" alongside the Reindeer Parade they were encouraged to look to further develop their very successful events into a full Festival programme which would, they hoped would incorporate an "ice rink" activity.

Planning

By working collaboratively as a consortium of groups/organisations with support from private sector business the organisers approached funders jointly. All seeking funding worked to provide a plan which would enable a series of events to be established and thus provide a "Winter Festival Programme " for the community of Oban Lorn and Isles which would also encourage others to visit the area.

Aims

- *To enhance and build on previously successful " Ready Steady Christmas events" e.g Reindeer Parade, Victorian Market.*
- *To pilot and provide the first "winter festival" over two weekends in Oban*
- *To assist and enhance the local economy by encouraging community participation and late season visitors to Oban.*
- *To support, encourage and promote Oban Lorn and Isles as a vibrant "community active" area.*

It was a learning curve for the committee , through many days and nights of planning to bring together the full programme. Appendix 2

The festival began on Thurs 17th Nov with a beautiful production from Ballet West and ended on the 27th Nov with the spectacular " fireworks" display and a lot of enjoyment, fun, laughter and fundraising in between.

People of Oban and surrounding areas –did us proud! Thank you so much to everyone who supported Oban Winter Festival in many differing ways. Yes it was hard work but without the fantastic support of businesses, participants and audiences it would not have been the great success that it was.

You all turned out on some really wet/cold days and nights for the events for which we are very grateful. The Festival organising committee appreciated your encouragement and were extremely pleased to hear your lovely compliments about all the happenings during the 10 days of the Festival.



The committee is appreciative for the financial support received from Argyll Beats Cardiovascular Disease, MacQueens Charitable Trust, NHS Highland (Oban Lorn & Isles Public Health Network), Argyll and Bute Council, Ross Electrical and Oban 200.

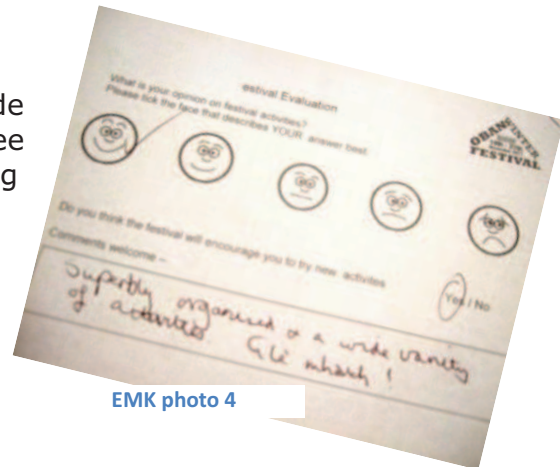
The funding support allowed us to progress many of our planned surprises, however we also have a great deal of thanks to give to our many "in kind" and event supporters from across the whole community. Without this joint effort the Festival would not have been possible. *Appendix 3 supporters*



Evaluation

To learn from this event and to provide feedback to our funders the committee completed a range of evaluation using differing methods to engage with participants attending the Festival.

The result is that we have had a very good response rate and a raft of knowledge to build on for the following year.



EMK photo 4

- The method of evaluation was by short surveys which were completed face to face during Festival events (Ice rink, floral demonstration and children's market, online using Survey Monkey, email to participating stall holders and event organisers and comments received through what turned out to be a very successful "Facebook" page.

In total we have 253 survey responses, this does not include the additional anecdotal and "facebook comments" received.

To report our findings and show the community benefit from a Winter Festival we have categorized the findings under 3 headings:

- ✓ *Local Economy*
 - *business community*
 - *fundraising (local charities)*
- ✓ *Feel good factor – Mental Health and wellbeing*
- ✓ *Community Cohesiveness/involvement*



Local Economy

At a time of year when the town is normally quiet, we are certain that those attending will agree that the Festival achieved the aim of providing a vehicle to support the local economy. The 10 days of activity did boost the economy of the area with busy shops and restaurants, particularly over the two weekends at the beginning and end of the Festival.

EMK photo 5

Anecdotal discussion with the business community has told us of the increase in trading with comments such as

- "Can we have winter festival every weekend"
- "Great to see the town buzzing"
- "Lots of families home and coming out for meals"
- "Sold out" (from our stall holders)

And from our **survey responses**

- *The huge range of events were great for local businesses during a very quiet season*
- *Great idea to bring business to the town*
- *Excellent for the town, hope becomes a regular event!*



EMK photo 6

The following questions were posted in our on-line survey with a Yes/No option
The results with positive responses are as follows:

Whilst attending the Festival events

Did you eat out? - 79%

Did you shop for non food/gift items - 74%

Did you stay overnight 8%

More than one night 3%

This is all very positive results for an inaugural Festival with the results also showing that 9% of those attending travelled over 50 miles.



Our local charities also benefited financially during Festival, through events organised by themselves or via events co-ordinated by the committee such as the Children's Market afternoon at which average donation for each stall £130 giving estimate of £3900 to local charities – not bad for 2 hours on an November afternoon.

Below are a couple of examples of monies raised for and by charities

- One organisation gained over £500 donations for items their volunteers had produced
- The 1745 house at Dunollie received donations of £653 from their afternoon teas
- Stall holders at the children's market afternoon reported average income on stall of £130
- Events organised by local business – donated to local charities

All of the above show how different activities and organisations took part in the Winter Festival to gain funds which will support their service delivery and thus assist with the sustainability of our very active voluntary sector here in Oban, Lorn and the Isles.

Feel good factor – Health and Wellbeing

From early stages of planning "fun and laughter" was always high on the agenda for the committee members to encourage the community to participate.

"can we have a snow machine?" was one of the early request which we were all very excited about with good reason as it proved to be a real hit with children and adults alike



photo courtesy oban times

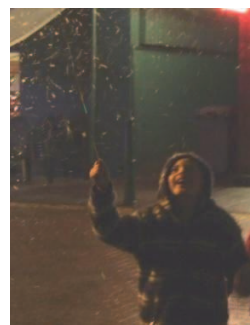


photo emk

Despite some setbacks with funding we were delighted to be able to achieve the aim of encouraging family sports activity by providing the "ice rink" with support from Atlantis Leisure who agreed to act as host for the rink.

The "ice rink" was the initial talking point of the Festival and encouraged many families to participate in an activity that is not normally on offer in our home town.



Face to face surveys were completed at the "rink" with both adults and children. From the responses it was encouraging to discover that 56 from 124 responses would consider other physical activities having attended the "rink". The smiles on the faces at events, with young and old enjoying the activities and comments from participants showed positive results

- *Elderly resident - I went down to the Reindeer parade, have never done this before and met lots of people had not seen for years*
- *Student - lovely to come home to such great events*
- *Charity stalls – great way to speak to people in an informal setting*
- *How positive everyone was even in the terrible weather*

The Public Health Network had an unmanned stall at Atlantis with leaflets on various health topics and support groups, this stall showed a large uptake on leaflets over the week and although no direct contact with public the majority of leaflets taken related to elderly health topics and mental health topics.

Community Cohesiveness/Involvement



Photograph courtesy of Oban Times

The inaugural Winter Festival was completely led, co-ordinated and managed by community volunteers who invited the wider community to become involved, this was achieved by describing to the community the mutual benefits to be gained from engagement.

The enthusiasm and support for the Festival to progress by local businesses and event providers acted as further motivation to make the "Festival" an event Oban would be proud of.

It cannot be underestimated the time and effort that was required to support the Festival through potential obstacles and hurdles, the committee worked hard to act not only as "the glue" for those involved by programming events, timetabling the events but also as much as possible supporting event providers.

The funding grants (£7902) and donations from trusts and business (£1250) would not have been sufficient to run the Festival without the volunteer activity. It is difficult to allocate a monetary value to the volunteer input but we estimate £8000 additional funding would have been required to allow the event to have run without all the volunteer activity from the whole community which we received.

Our on line survey (105 responses) reported a common theme

- *Very much liked the lack of 'top down' involvement*
- *Pulling Oban together as a community.*
- *Great sense of community about the place*
- *Lots of community & business involvement*



Photographs courtesy Wee Beauty Photography

Conclusion

We as a “committee” are now reflecting on “what went well and what could be improved” during the 10 days by reading and listening to our respondents comments. Further samples of feedback listed in Appendix 1 attached – strengths and weakness.

We have already met with many of our supporters to start the discussions on how to progress for the next Winter Festival, however, to progress a Festival 2012 we have various decisions which will be required to allow access to funding.

When it is reported to us that other areas of Argyll & Bute are now considering following our lead by creating their own winter festivals, we would hope that funders will see this event report as evidence of money well spent and worthy of support in the future.



Photograph courtesy of Oban Times

Appendix 1

Strenghts and Weakness comments

Sample comments from strenghts

- the variety of events for ALL ages
- whole event was well thought out and we thoroughly enjoyed it
- great to see the town busy on some pretty awful November nights
- The theme was lovely & the window displays are amazing - great way of getting local businesses involved & making the town look festive.
- wide range to suit lots of different people
- the people involved in the festival were helpful and friendly, and the activities were lovely
- The best fireworks display this town has ever seen.
- The lighthouse pier is far better we were stretched out all the way along the esplanade as far as the castle to watch and enjoy
- great being able to nip into a coffee shop for a warm drink with the kids while waiting
- How positive everyone was even in the terrible weather
- The facebook advertising was superb

Sample comments from weakness - Improvements requested

- Deals to be had with the hotels for locals travelling from other parts of the county
- the out of town signs in the run-up to the festival didn't do it justice
- Thought the parade could have had a bit more to it though rather than just the pipes and reindeer, maybe some other local groups could have been involved
- Latern parade could have done with finishing somewhere other than in the distillery square as it got quite crowded with people trying to get in and out the same exit initially.
- More advanced warning of when the festival was going to be held
- Better signage to events - went to go to the market on Saturday but couldn't find it a wee sign pointing me in the direction
- Indoor Victorian crowded
- town didn't look very Christmassy
- I feel that there wasn't enough advertising in the town itself of what was going on
- some things on too late for people with children and events overlapping
- Website a bit jumpy

And finally some general comments from our survey

- My partner and I really love Oban and would love to stay there. We think the festival is a great idea and hope it goes from strength to strength each year.
- Brilliant community effort, with excellent partnership working between organisations.
- Looking forward to it next year already!

**Appendix 2
Programme**

Thursday 17th November 2011

Festival Opener with Ballet West ;
“Another Opening” Corran Halls

Friday 18th November 2011

Official opening The 1745 House -
Dunollie

Dramatic Tale of Jacobites and the
Enlightenment Exhibition

Saturday 19th November 2011

Argyll Animal Aid Fayre, Corran Halls -
11am -3pm

Synthetic Skating for all the family,
Atlantis Leisure, booking required
Touch Pool courtesy of Sea Life
Sanctuary

Atlantis Leisure; 10 – 4pm

Carriage Rides, Argyll RDA - Dunollie; 1-
4pm

Cream Teas at The 1745 House
Dunollie ; 1 -4pm

Guided walks – Dunollie Castle.

Meet at The 1745 House - 2pm

Cook along for children,
Waterfront; 3 – 5pm - booking required
Victorian Market Stalls, Caledonian
Hotel; 3- 7pm

Santa’s Post Box, Caledonian Hotel; 3-
7pm

Reindeer Parade,

Corran Halls to Station Square; 5pm

Christmas Tree Lights- switch on 6pm

Comedy Club – Anvil Springstein,
Waterfront, Railway Pier; 9.30pm
(tickets)

Sunday 20th November 2011

Synthetic Skating for all the family

Atlantis Leisure, Booking required

Winter Wonderland Fun Day –

Sea Life Sanctuary, Barcaldine; 10am-
4pm

Cream Teas at The 1745 House -
Dunollie ; 1pm -4pm

Guided walks – Dunollie Castle. Meet at
1745 House 2pm

Carriage Rides, Argyll RDA, Dunollie
House; 1-4pm

Sugar craft demonstration and
workshop;

Glencruitten Church Centre 1.45pm –
5pm

Monday 21st November 2011

Coffee & Blether; Congregational Church
Hall; 10.30 -12.30

AVA Past Times - Old Oban display and
crafts,

21 High Street ; 11am -3pm

Synthetic Skating for all the family

“Abstracts” Oban Photographic; Regent
Hotel; 7.30pm

Talk - “Hope MacDougall a child growing
up in Dunollie House” 7pm at the 1745
House.

Tuesday 22nd November 2011

Synthetic Skating for all the

family; Atlantis Leisure,

AVA Past Times - Old Oban display and
crafts, 11-3pm

“A schoolboy’s recollection of the war
years” –

R Banks Oban War & Peace Museum,
10am

“The Goonies” Phoenix Film Night,
Corran Halls 7pm

Wednesday 23rd November 2011

AVA Past Times - Old Oban display/
crafts, 11- 3pm

Children Storytelling – “ Tales of the old
kitchen” 4- 5pm at The 1745 House,
Dunollie

Under 18’s School of Rock – Open Mic-
Skipinnish Ceilidh House; 7pm – 9pm

Christmas Floral Demonstration,
Argyllshire Gathering Hall ; 7.30pm

Thursday 24th November 2011

ARCTIC Lectures - SAMS Staff during
school hours

Rolls n Rollers- Argyll College,

Glengallan ; 11am - 6pm; booking
required

AVA Past Times - Old Oban display/
crafts;; 11am -3pm

Party Ideas - Kitchen Garden , 7pm –
ticket only

Friday 25th November 2011

“Salting away for winter” butter making
workshops,

The 1745 House Dunollie 2 – 4pm
booking reqd

Phoenix Family Ceilidh -Caledonian
Hotel ; 7.45pm – 12

Wine Call My Bluff - Waterfront Oban;
9.30pm

Winter Fairground – Old Rockfield Car Park

Saturday 26th November 2011

Farmer's Market and Grazing,
Waterfront, Railway Pier; 10.30am – 3pm

Taster sessions – Kilbowie Outdoor Centre- Dry Ski Slope; Gorge walking, Cycling - 9.30am – 12.30: 1.30pm – 4.30pm Booking required

Kundalini Yoga

Kilbowie Studio, Gallanach; 10am – 11am

Cream teas – The 1745 House - Dunollie; 1pm -4pm

Guided walks – Dunollie Castle.

Meet at The 1745 House 2pm

Family Ceilidh , Oban Music & Dance - Skipinnish Ceilidh House; 7pm-10pm

Oban 365 – Countdown to Christmas Disco, Argyllshire Gathering; 9pm -1am advance ticket £5

Winter Fairground – Old Rockfield Car Park;

Sunday 27th November 2011

Advent Service - Kilmore & Oban Church,

Glencruitten 11.30am;

Adult 5 aside- Football Tournament – Phoenix Group:

Atlantis; 12 noon

Children's / Young Enterprise Market plus Youth Choirs, Corran Halls; 2pm-4pm

“Guided walks – Dunollie Castle.”

Meet at The 1745 House 2pm

Santa Race- Atlantis Leisure to Station; 3pm

Cream Teas - The 1745 House- Dunollie 1pm -4pm

“Elves Treasure Hunt”, Stramash – Dunollie; 1-4pm

Winter Fairground – Old Rockfield Car Park

Family Lantern Parade , Corran Halls to Distillery Stafford St; 5pm

Entertainment & Food Court– Oban Distillery Court Yard ; 5.15 – approx 7pm

Auld Lang Syne

Appendix 3

Supporters

Alba

Argyll College

Argyll RDA

Argyll Voluntary Action

Atlantis Community Leisure

BBC Alba- A Wolffe

Ballet West

Caledonian Hotel

For Argyll

D Hardley – marketing photo

Kilbowie Outdoor Centre

Lidl

Little Bay Trading

Oban 365

Oban Distillery

Oban FM

Oban High School Pipe Band

Oban Phoenix Cinema Group

Oban Pipe Band

Oban Lions

Oban Lorn Tourism Association

Oban Times – reporters and
photographers

Oban Photography Club

Oban Rotary Club

Oban Sealife Sanctuary

Pyro 1 – Cllr L Glen Lee; Cllr R
MacCuish

The 1745 House Dunollie

The Kitchen Garden

Scottish Association Marine Science

Stramash

Stewards Fairground

Strathclyde Police

Strathclyde Fire & Rescue

Skipinnish Ceilidh House

Visit Scotland

Wee Beauty Photography

Waterfront Restaurant

War & Peace Museum & Robin Banks

Technical support - C Black

Twitter support – Chris Kenned Ee
usk

Facebook support – D MacIntyre

Gaelic Santa - F MacKenzie

ALL our STALL Holders at Events

This page is intentionally left blank